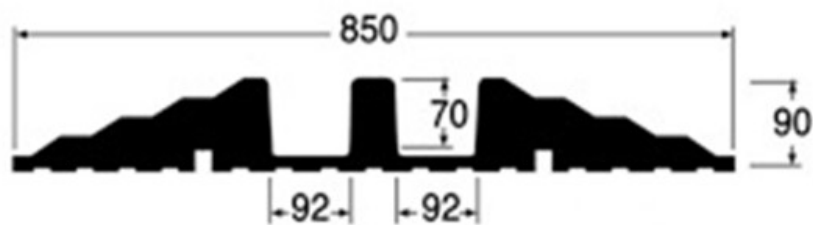
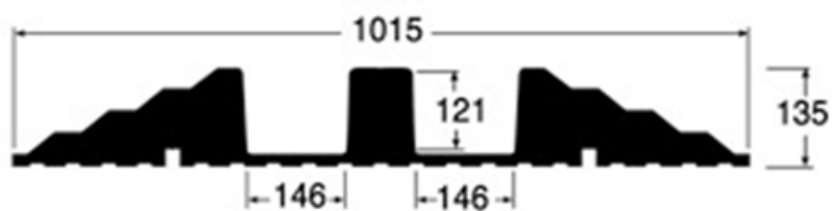


PAR range

- Top-open ramps
- Maximum load per wire: 5 tons
- Especially designed to be used with pipes
- In elastomer, black color
- Reflective strips on each side
- 2 models depending on the number and diameter of the cables and pipes
- Length: 29 or 30 cm

RAMP 70: **PAR070B30** (30 cm)RAMP 121: **PAR121B29** (29 cm)